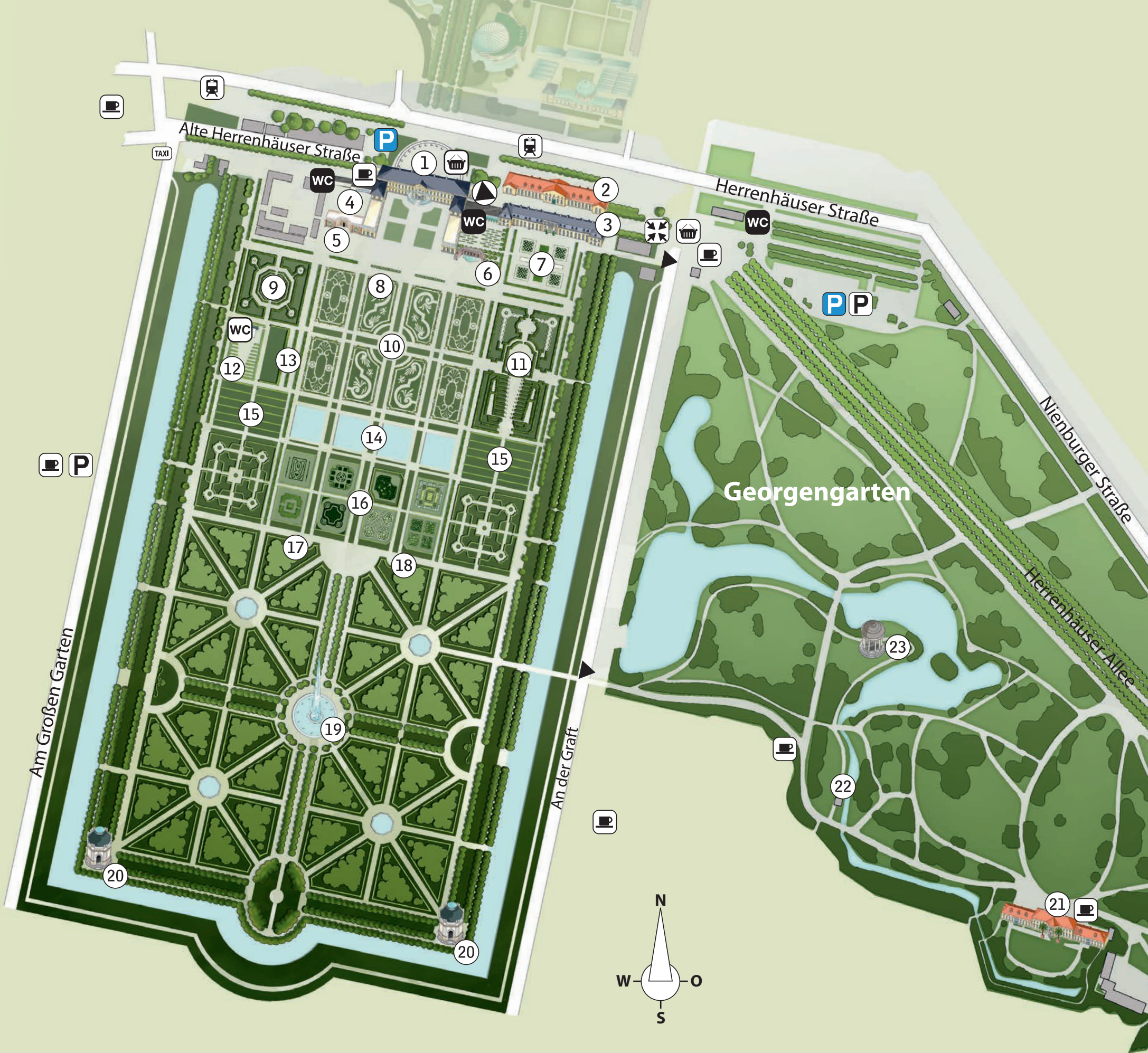


## Grosser Garten and Georgengarten



- ① Palace/Museum/Congress Centre
  - ② Orangery
  - ③ Gallery and Foyer
  - ④ Fig Garden
  - ⑤ Grotto by Niki de Saint Phalle
  - ⑥ Cascade and Flower Garden
  - ⑦ Orange Parterre
  - ⑧ Sundial and Great Parterre
  - ⑨ Maze
  - ⑩ Bell Fountain
  - ⑪ Garden Theatre
  - ⑫ Rehearsal Stage
  - ⑬ Viewing Terrace
  - ⑭ Swan Ponds
  - ⑮ Linden Rows
  - ⑯ Special Gardens
  - ⑰ Remains of the Palace Steps
  - ⑱ Sophie Memorial
  - ⑲ Great Fountain
  - ⑳ Pavilion by Remy de la Fosse
  - ㉑ Wilhelm Busch – German Museum for Caricature and Critical Graphic Arts
  - ㉒ Obelisk
  - ㉓ Leibniz Memorial
  - P** Disabled Parking Space
  - P** Car Park
  - WC** Disabled Toilets
  - WC** Toilets
  - Shop
  - Entrance
  - Exit only
  - No entry
- Picnic is allowed: ⑬, ⑮ and along the moat